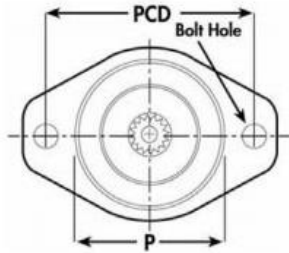


SAE MOUNT & SHAFT DIMENSIONS

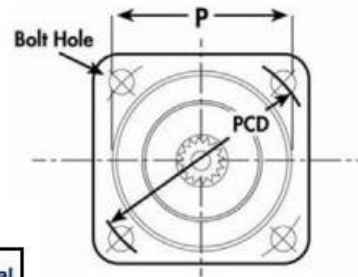


SAE TWO BOLT MOUNTING



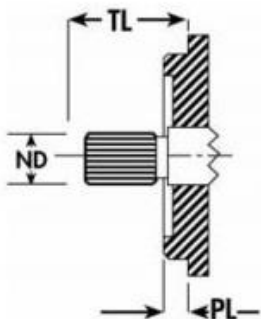
SAE CODE	PCD	Bolt Hole Diameter	(P) Pilot Diameter
AA	3.25 82.5mm	0.406	2.00 50.8mm
A	4.187 106.3mm	0.437	3.25 82.55mm
B	5.75 146mm	0.562	4.00 101.6mm
C	7.125 180.9mm	0.687	5.00 127mm
D	9.00 228.6mm	0.812	6.00 152.4mm
E	12.50 317.5mm	1.062	6.50 165mm

SAE FOUR BOLT MOUNTING



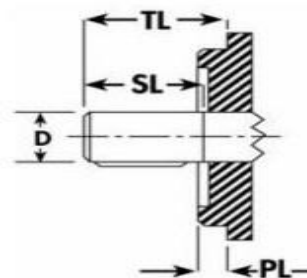
SAE CODE	PCD	Bolt Hole Diameter	(P) Pilot Diameter
B	5.000 127mm	0.562	4.00 101.6mm
C	6.375 161.9mm	0.562	5.00 127mm
D	9.000 228.6mm	0.812	6.00 152.4mm
E	12.500 317.5mm	1.062	6.50 165mm

SAE SPLINED SHAFTS



SAE CODE	(ND) Nominal Diameter	SPLINE DETAIL	(TL) Total Length
AA	0.500	1/2" 9T	1.062
A	0.625	5/8" 9T	1.250
AH	0.750	3/4" 11T	1.250
B	0.875	7/8" 13T	1.625
BB	1.000	15T	1.812
C	1.250	1-3/4" 14T	2.187
CC	1.500	1-1/2" 17T	2.437
D	1.750	1-3/4" 13T	2.937
E	1.750	1-3/4" 13T	2.937

SAE STRAIGHT KEYED SHAFTS



SAE CODE	(D) Shaft Diameter	(SL) Shaft Length	(TL) Total Length	Key Width	Pilot Length
AA	0.500	0.750	1.062	0.125	0.250
A	0.625	0.937	1.250	0.156	0.250
AH	0.750	0.937	1.250	0.187	0.250
B	0.875	1.312	1.625	0.250	0.375
BB	1.000	1.500	1.812	0.250	0.375
C	1.250	1.875	2.187	0.312	0.500
CC	1.500	2.125	2.437	0.375	0.500
D	1.750	2.625	2.937	0.437	0.500
E	1.750	2.625	2.937	0.437	0.625